

# Bomanite® Con-Color

SITE CONSTRUCTION  
 CONCRETE  
 FINISHES

BOMANITE 5 CORPORATION 05  

 2,3,9

## BOMANITE CON-COLOR STANDARD APPLIED TO UNCOLORED (GRAY) CONCRETE



**Natural Gray**



**Cream**



**Autumn Brown**



**Sand**



**Forest Brown**



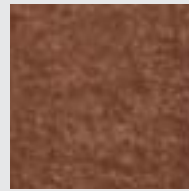
**Mexican Tile**



**Franciscan Red**



**Boca Pink**



**Brick Red**



**Chargreen**



**Nickel Gray**



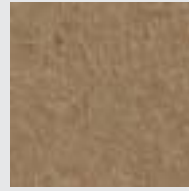
**Sonora Tan**



**Caramel**



**Cobblestone Gray**



**Desert Tan**

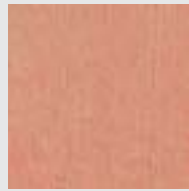
## BOMANITE CON-COLOR EXOTIC APPLIED TO UNCOLORED (GRAY) CONCRETE



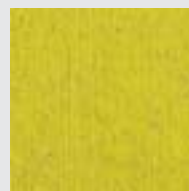
**Barberry**



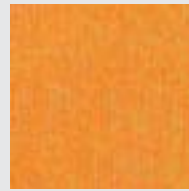
**Garden Pond**



**Tawny Peach**



**Sea Moss**



**Autumn Orange**



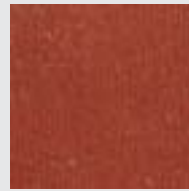
**Royal Lilac**



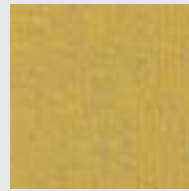
**Old Rose**



**Harper Blue**



**Barn Red**



**Harvest Wheat**



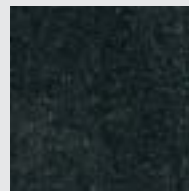
**Cobalt Blue**



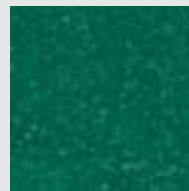
**Deep Violet**



**Indigo Blue**



**Jet Black**



**Park Green**

**COLOR SELECTION GUIDE**

Limitations: The fifteen standard and fifteen exotic Bomanite Con-Color colors are shown to applied to a gray base. However, Bomanite Con-Color produces unique effects to each individual concrete substrate and may differ significantly from the colors shown on this chart. Bomanite Con-Color will produce a wide range of finished colors depending on many factors including, but not limited to, finishing techniques, mix designs, curing and sealing practices, age and condition of concrete in existing slabs, base color, and surface porosity. There is an element of uncertainty and unpredictability inherent in the use and final appearance of Bomanite Con-Color, including uneven, mottled or translucent effects. Also, concrete that has been extremely hard troweled may be difficult to stain. It is strongly recommended to sample the actual surface that is to be stained (in an inconspicuous area). Refer to the Bomanite Con-Color Technical Bulletin for additional information and product limitations.