

BOMANITE CON-COLOR STANDARD

APPLIED TO UNCOLORED (GRAY) CONCRETE



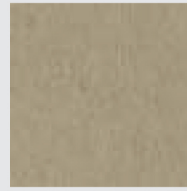
Natural Gray



Cream



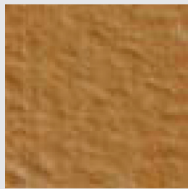
Autumn Brown



Sand



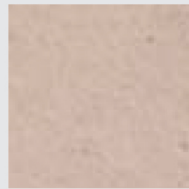
Forest Brown



Mexican Tile



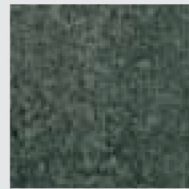
Franciscan Red



Boca Pink



Brick Red



Chargreen



Nickel Gray



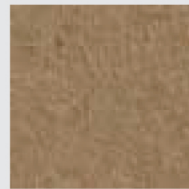
Sonora Tan



Caramel



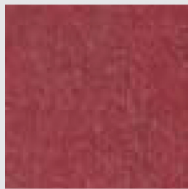
Cobblestone Gray



Desert Tan

BOMANITE CON-COLOR EXOTIC

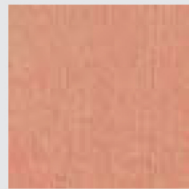
APPLIED TO UNCOLORED (GRAY) CONCRETE



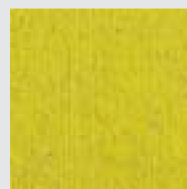
Barberry



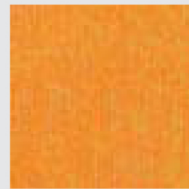
Garden Pond



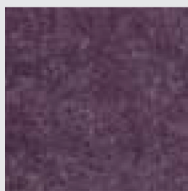
Tawny Peach



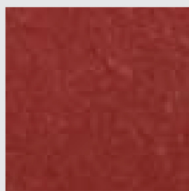
Sea Moss



Autumn Orange



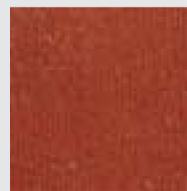
Royal Lilac



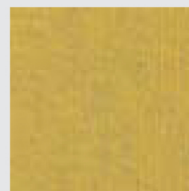
Old Rose



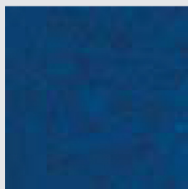
Harper Blue



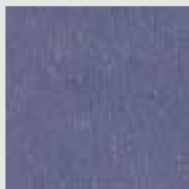
Barn Red



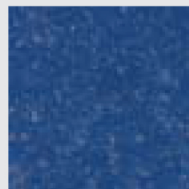
Harvest Wheat



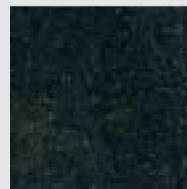
Cobalt Blue



Deep Violet



Indigo Blue



Jet Black



Park Green

Limitations: The fifteen standard and fifteen exotic Bomanite Con-Color colors are shown to applied to a gray base. However, Bomanite Con-Color produces unique effects to each individual concrete substrate and may differ significantly from the colors shown on this chart. Bomanite Con-Color will produce a wide range of finished colors depending on many factors including, but not limited to, finishing techniques, mix designs, curing and sealing practices, age and condition of concrete in existing slabs, base color, and surface porosity. There is an element of uncertainty and unpredictability inherent in the use and final appearance of Bomanite Con-Color, including uneven, mottled or translucent effects. Also, concrete that has been extremely hard troweled may be difficult to stain. It is strongly recommended to sample the actual surface that is to be stained (in an inconspicuous area). Refer to the Bomanite Con-Color Technical Bulletin for additional information and product limitations.